

CBX4 Antibody
Rabbit mAb
Catalog # AP92320

Specification

CBX4 Antibody - Product Information

Application	WB
Primary Accession	O00257
Reactivity	Rat
Clonality	Monoclonal
Other Names	
CBX4; hPc2; NBP16; PC2;	
Isotype	Rabbit IgG
Host	Rabbit
Calculated MW	61368 Da

CBX4 Antibody - Additional Information

Dilution	WB~~1:1000
Purification	Affinity-chromatography
Immunogen	A synthesized peptide derived from human CBX4
Description	E3 SUMO-protein ligase which facilitates SUMO1 conjugation by UBE2I. Component of the Polycomb group (PcG) multiprotein PRC1 complex, a complex required to maintain the transcriptionally repressive state of many genes, including Hox genes, throughout development.
Storage Condition and Buffer	Rabbit IgG in phosphate buffered saline , pH 7.4, 150mM NaCl, 0.02% sodium azide and 50% glycerol. Store at +4°C short term. Store at -20°C long term. Avoid freeze / thaw cycle.

CBX4 Antibody - Protein Information

Name CBX4

Function

E3 SUMO-protein ligase which facilitates SUMO1 conjugation by UBE2I (PubMed:12679040). Involved in the sumoylation of HNRNPK, a p53/TP53 transcriptional coactivator, hence indirectly regulates p53/TP53 transcriptional activation resulting in p21/CDKN1A expression. Monosumoylates ZNF131 (PubMed:22825850).

Cellular Location

Nucleus. Nucleus speckle. Note=Localization to nuclear polycomb bodies is required for ZNF131

sumoylation (PubMed:22467880). Localized in distinct foci on chromatin (PubMed:18927235)

Tissue Location

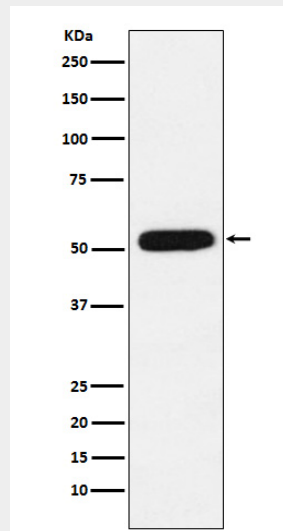
Ubiquitous.

CBX4 Antibody - Protocols

Provided below are standard protocols that you may find useful for product applications.

- [Western Blot](#)
- [Blocking Peptides](#)
- [Dot Blot](#)
- [Immunohistochemistry](#)
- [Immunofluorescence](#)
- [Immunoprecipitation](#)
- [Flow Cytometry](#)
- [Cell Culture](#)

CBX4 Antibody - Images



Western blot analysis of CBX4 expression in 293T cell lysate.